

# Know your risk

## Storm Surge

Storm surge is the No. 1 killer of people in hurricanes. Evacuations are based on the amount of storm surge that is predicted for the approaching hurricane. **Storm surge is water that is pushed from the Gulf of Mexico onto the land by the force of the wind.** It happens quickly and is powerful, rushing over land and overtaking everything in its path.

There are five zones for evacuation based on where the surge may impact. "Zone A" areas are most prone to storm surge. Those in Zone A are evacuated first. This includes the beaches and low-lying areas in the county. If the storm is large enough we may call for evacuations of Zones B, C, D and up through Zone E. You should evacuate outside of the evacuation areas. Each storm is different so it is critical that you stay informed.

Because evacuations take time to ensure everyone can get to safety, they are called well in advance of the storm. Evacuations have a beginning and end time. You must be in your safe shelter by the end of the evacuation period to make sure you are safe before the storm surge and high winds arrive.

Evacuation orders issued by Pinellas County are for the entire county, including cities and unincorporated areas.

Listen closely to the evacuation order to see if your zone is included. If it is not included, you do not need to evacuate based on storm surge.

## Know your zone

There are several ways to find out your evacuation zone:

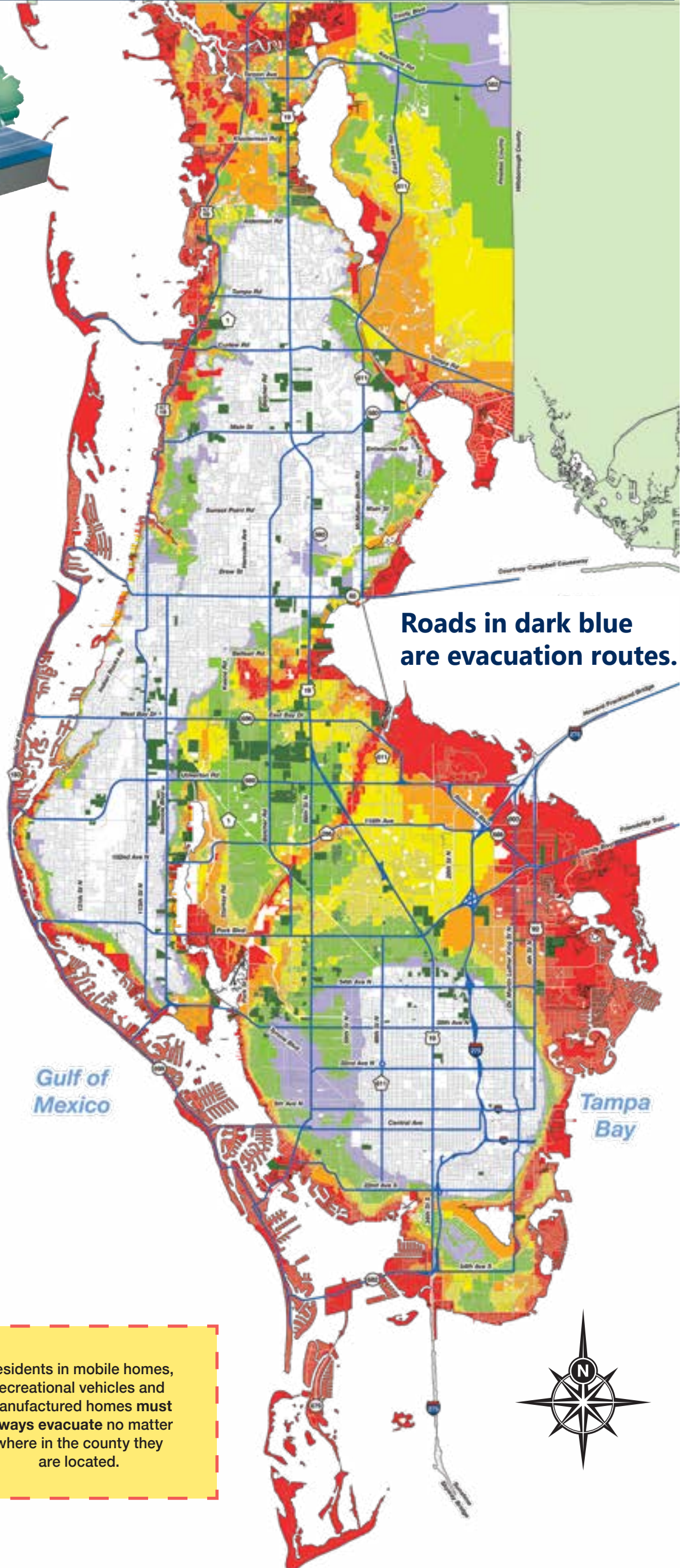
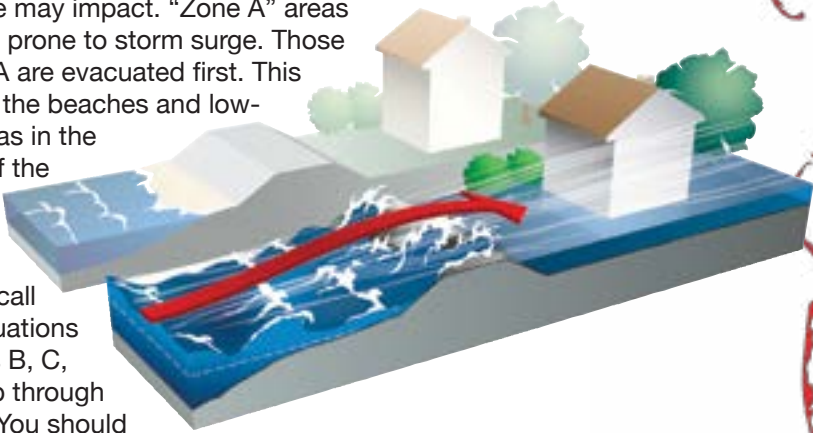
- [www.pinellascounty.org/knowyourzone](http://www.pinellascounty.org/knowyourzone)
- Ready Pinellas mobile app
- Utility bill (*Pinellas County Utilities customers, some cities*)
- Property Appraiser records
- (727) 453-3150 (*landlines only*)

If you live in or have a businesses in a "non-evacuation zone," you will not be ordered to evacuate (*with the exception of mobile and manufactured homes*)

Now you need to consider the other two potential risks: flood and wind.

## What's the difference between evacuation zones & flood zones?

EVACUATION ZONES	FLOOD ZONES
Based on Tropical Storm and Hurricane scenarios	Based on the probability of flooding from heavy rain or high tides
Based on ground elevation and proximity to water	Based on flood risk over period of years for insurance and building purposes
Determined by the National Hurricane Center	Set by the Federal Emergency Management Agency
Look up online at: <a href="http://www.pinellascounty.org/knowyourzone">www.pinellascounty.org/knowyourzone</a>	Look up online at: <a href="http://www.pinellascounty.org/flooding/maps.htm">www.pinellascounty.org/flooding/maps.htm</a>



Roads in dark blue are evacuation routes.

**EVACUATION GUIDELINES**  
*(mobile homes MUST always evacuate)*

Potential Surge Heights (in feet)

Mobile Home Parks <i>(mobile homes MUST always evacuate)</i>
<b>A Up to 11'</b> Evacuate red areas and all mobile homes
<b>B Up to 15'</b> Evacuate red and orange areas and all mobile homes
<b>C Up to 20'</b> Evacuate red and orange areas and all mobile homes
<b>D Up to 28'</b> Evacuate red, orange, yellow and green areas and all mobile homes
<b>E Up to 35'</b> Evacuate red, orange, yellow, green and purple areas and all mobile homes
Areas shown in white are non-evacuation zones.

Evacuation Routes

## My evacuation zone is



Residents in mobile homes, recreational vehicles and manufactured homes **must always evacuate** no matter where in the county they are located.

